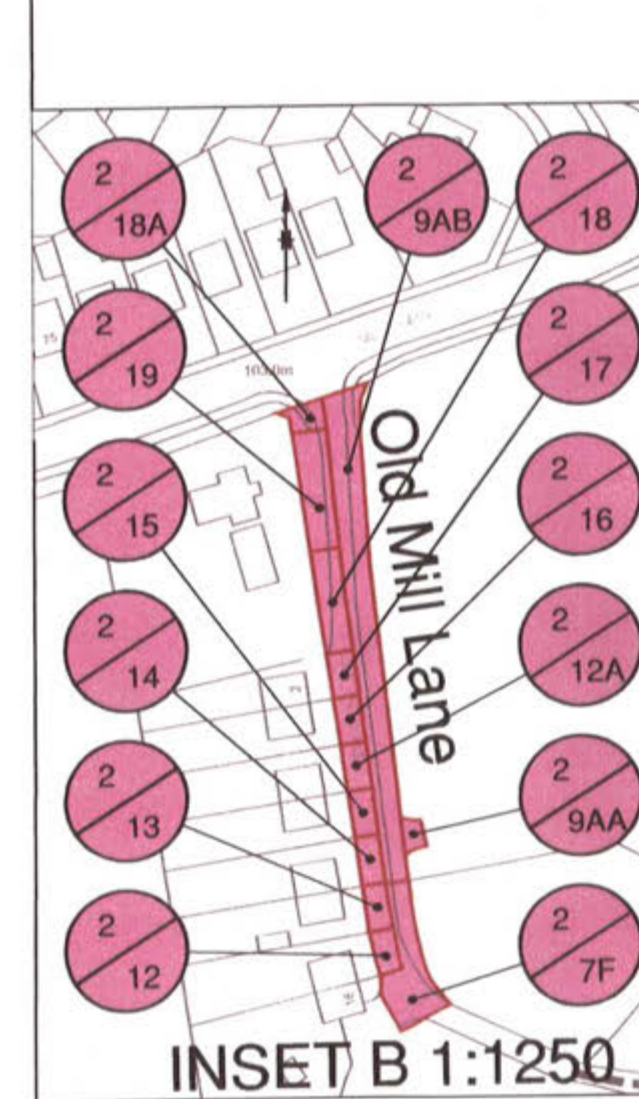


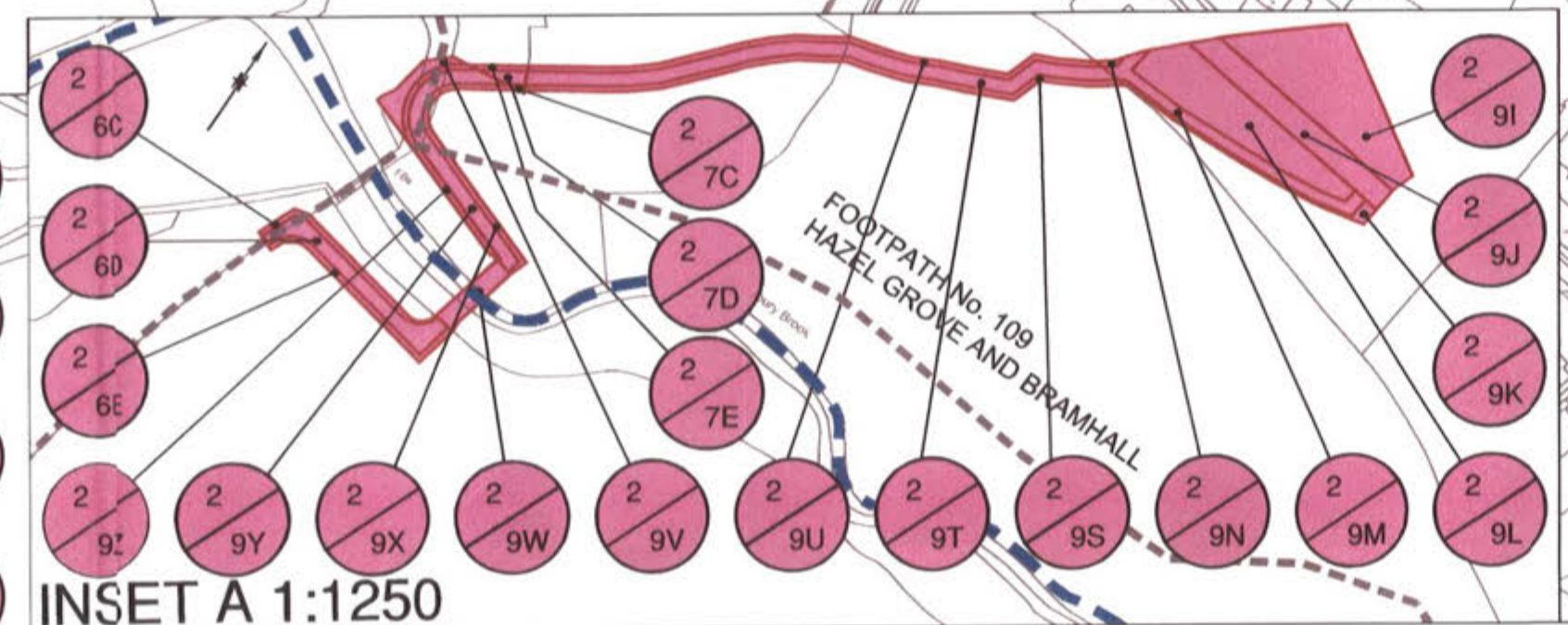
Land coloured pink hatched green is deleted from the Order by the Secretary of State for Transport by modification upon confirmation of the Order by him. Namely parts of Plot 2/1 and Plot 2/1A.

PARISH OF POYNTON - WITH - WORTH
BOROUGH OF CHESHIRE EAST

PARISH OF POYNTON - WITH - WORTH
BOROUGH OF CHESHIRE EAST



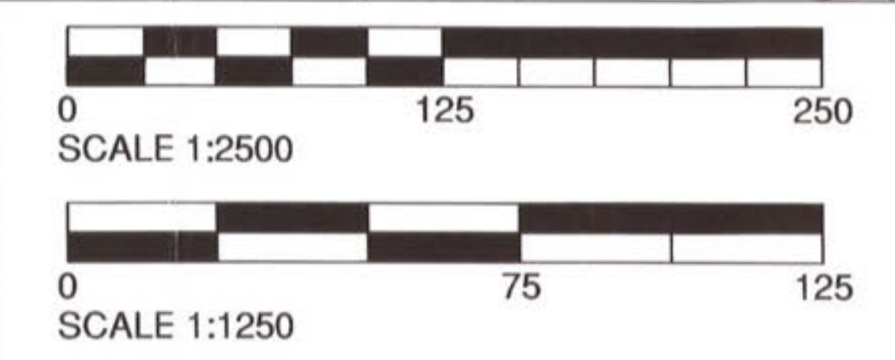
INSET B 1:1250



INSET A 1:1250

MAP REFERRED TO IN THE METROPOLITAN BOROUGH OF STOCKPORT (HAZEL GROVE (A6) TO MANCHESTER AIRPORT A555 CLASSIFIED ROAD) COMPULSORY PURCHASE ORDER 2013

The COMMON SEAL OF THE METROPOLITAN BOROUGH COUNCIL OF STOCKPORT was hereunto affixed this in the presence of :-
Mayor
Council Solicitor/ Authorised Signatory



This Site Plan 2 Rev A replaces Site Plan 2 by modification by the Secretary of State for Transport upon confirmation of the Order by him
This map is reproduced from Ordnance Survey material with the permission of Ordnance Survey on behalf of the Controller of Her Majesty's Stationery Office © Crown copyright. Unauthorised reproduction infringes Crown copyright and may lead to prosecution or civil proceedings. Stockport Metropolitan Borough Council 100019571 2010