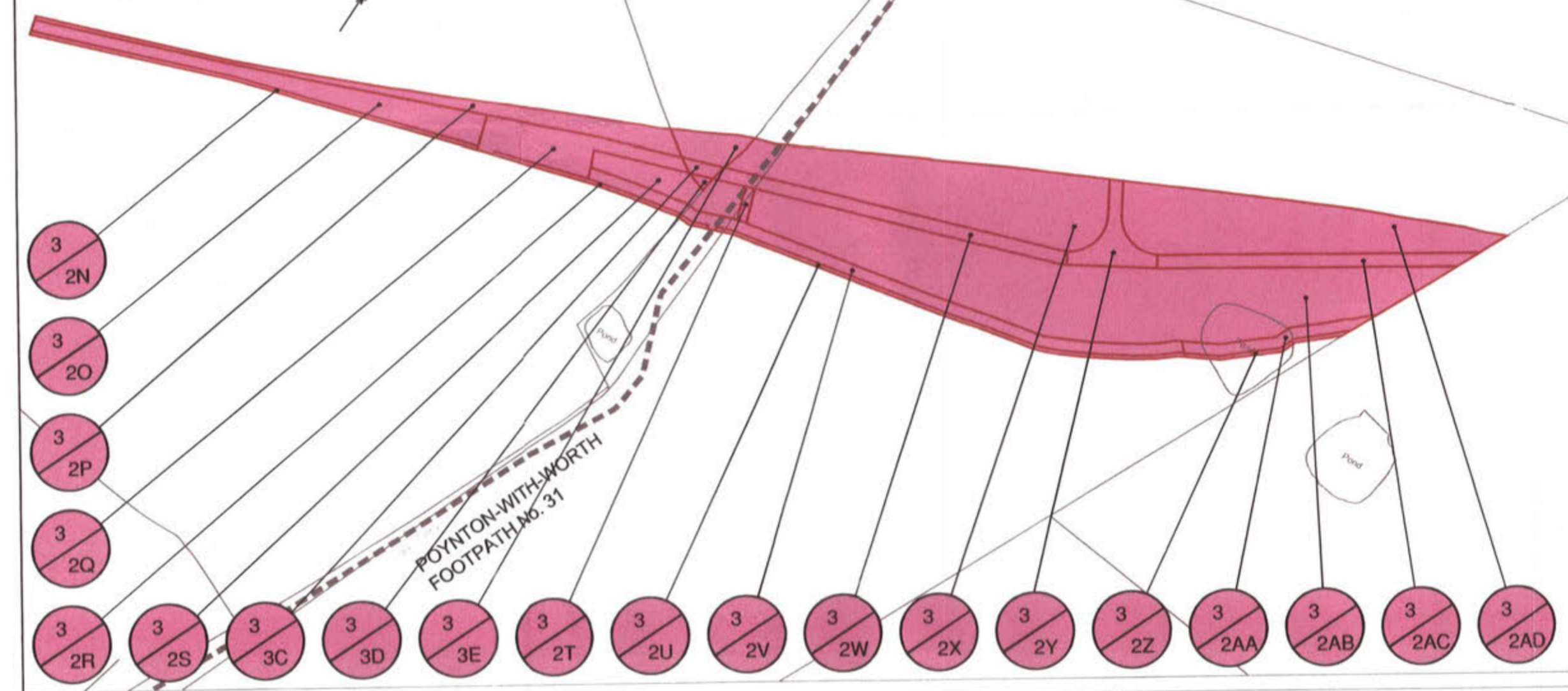
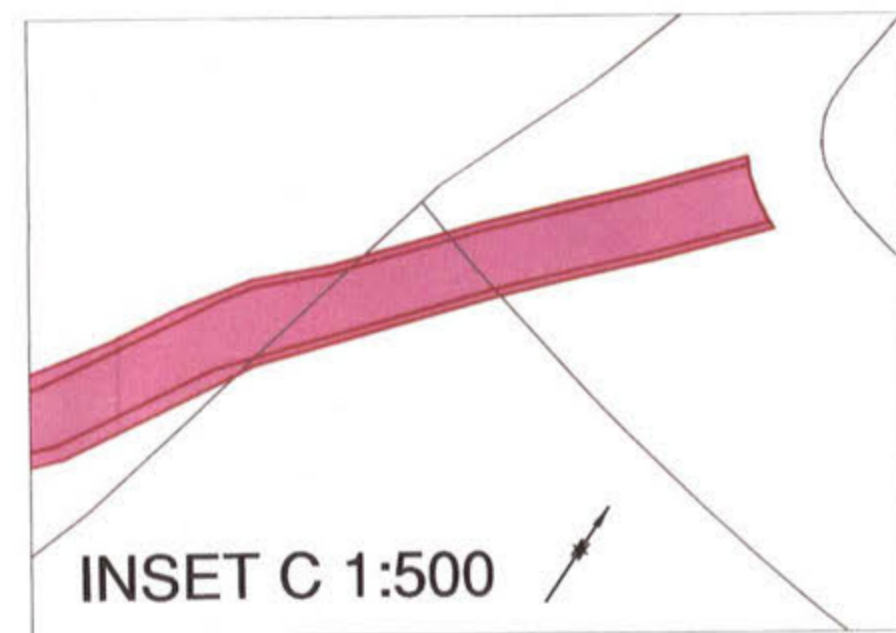
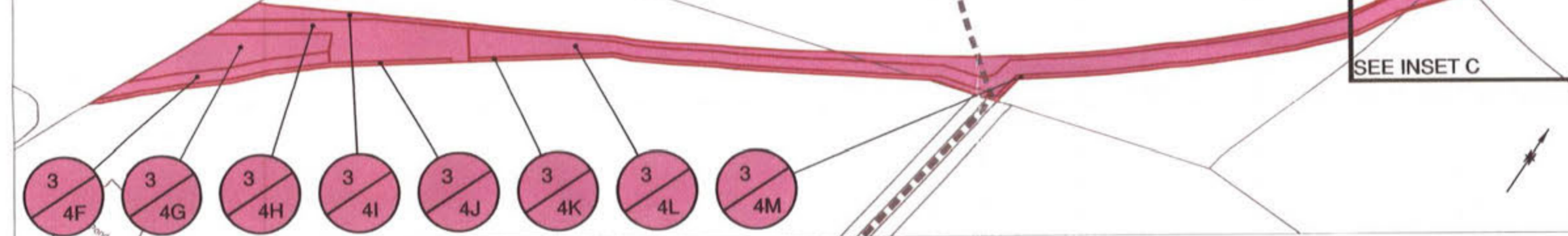


INSET A 1:1250

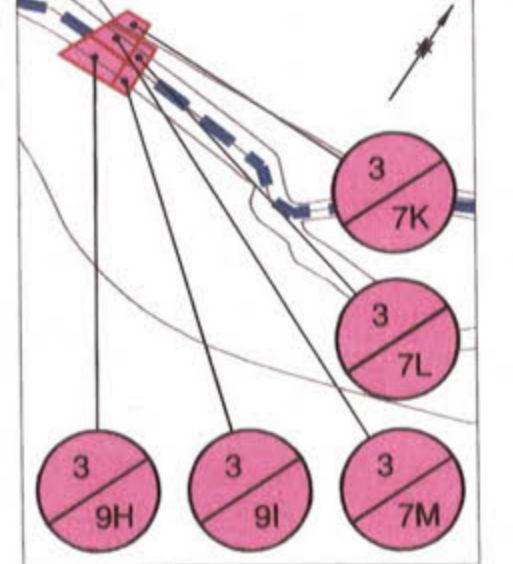


INSET B 1:1250



Land coloured pink hatched green is deleted from the Order by the Secretary of State for Transport by modification upon confirmation of the Order by him. Namely part of Plot 2/8A.

INSET E 1:1250

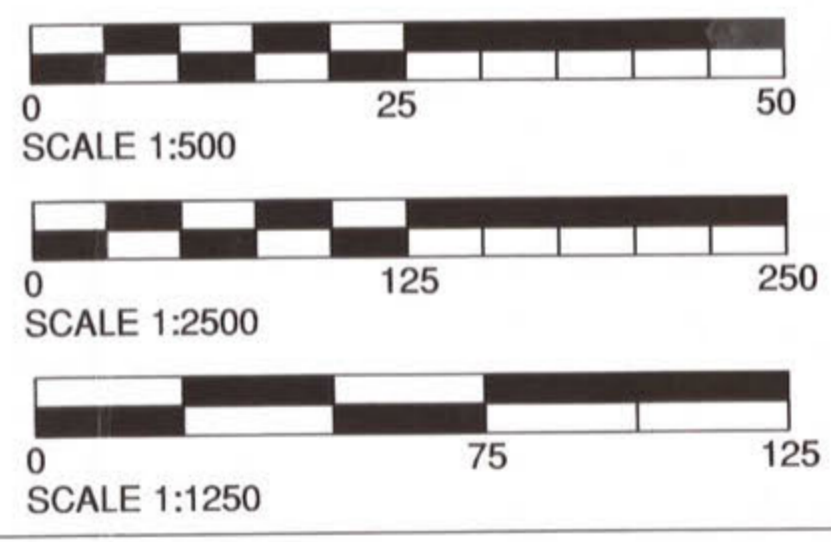


INSET D 1:500



The COMMON SEAL of THE METROPOLITAN BOROUGH COUNCIL OF STOCKPORT was hereunto affixed this in the presence of :-
 Mayor
 Council Solicitor/ Authorised Signatory

MAP REFERRED TO IN THE METROPOLITAN BOROUGH OF STOCKPORT (HAZEL GROVE (A6) TO MANCHESTER AIRPORT A555 CLASSIFIED ROAD) COMPULSORY PURCHASE ORDER 2013



This Site Plan 3 Rev A replaces Site Plan 3 by modification by the Secretary of State for Transport upon confirmation of the Order by him.

This map is reproduced from Ordnance Survey material with the permission of Ordnance Survey on behalf of the Controller of Her Majesty's Stationery Office © Crown copyright. Unauthorised reproduction infringes Crown copyright and may lead to prosecution or civil proceedings. Stockport Metropolitan Borough Council 100019571 2010